

# Unlocking Net Zero & Retrofit Success:

Strategies for Effective  
Asset Management

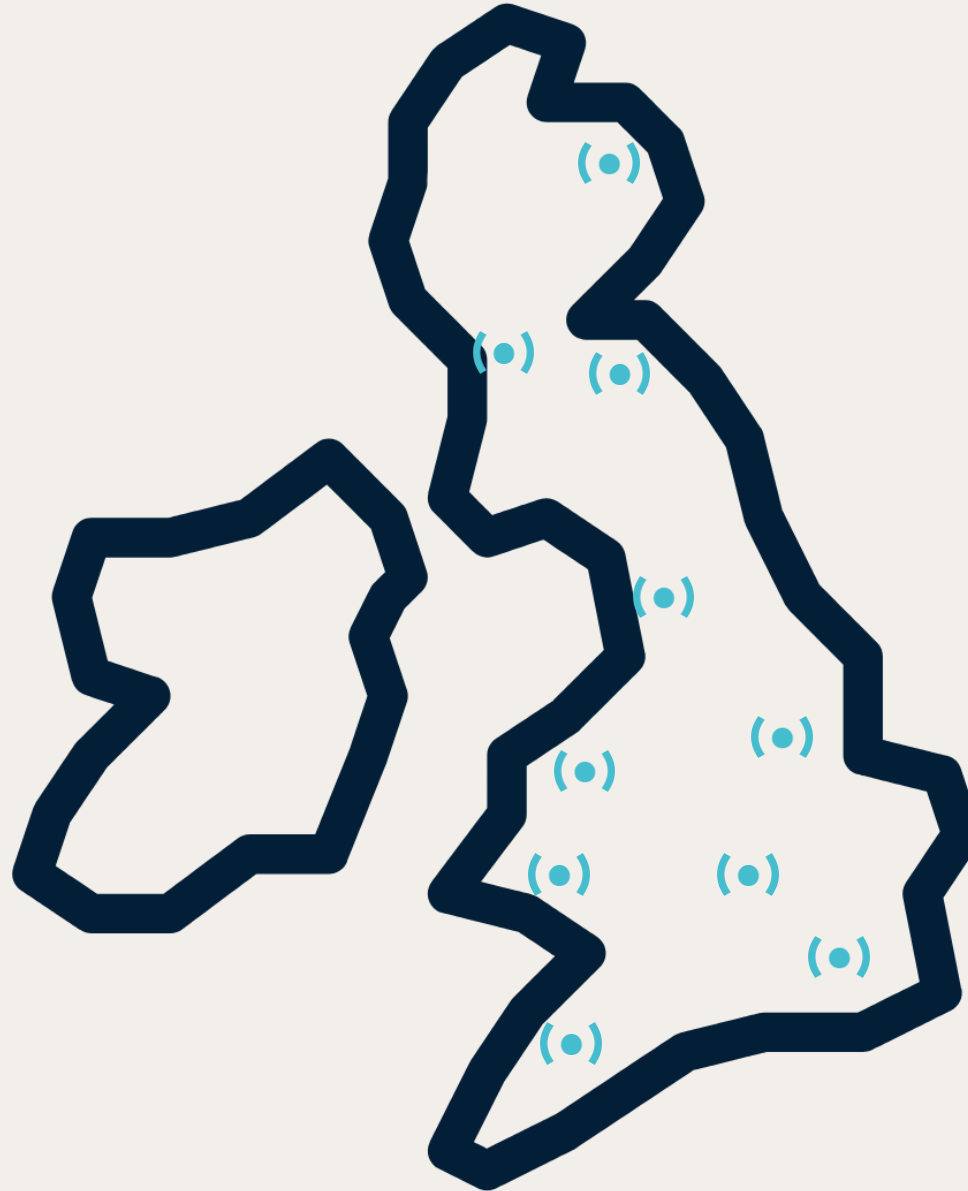


# About iOpt.

**9** Years  
in Sector

**60+** Social Landlords

**c. 25,000**  
Sensors Deployed



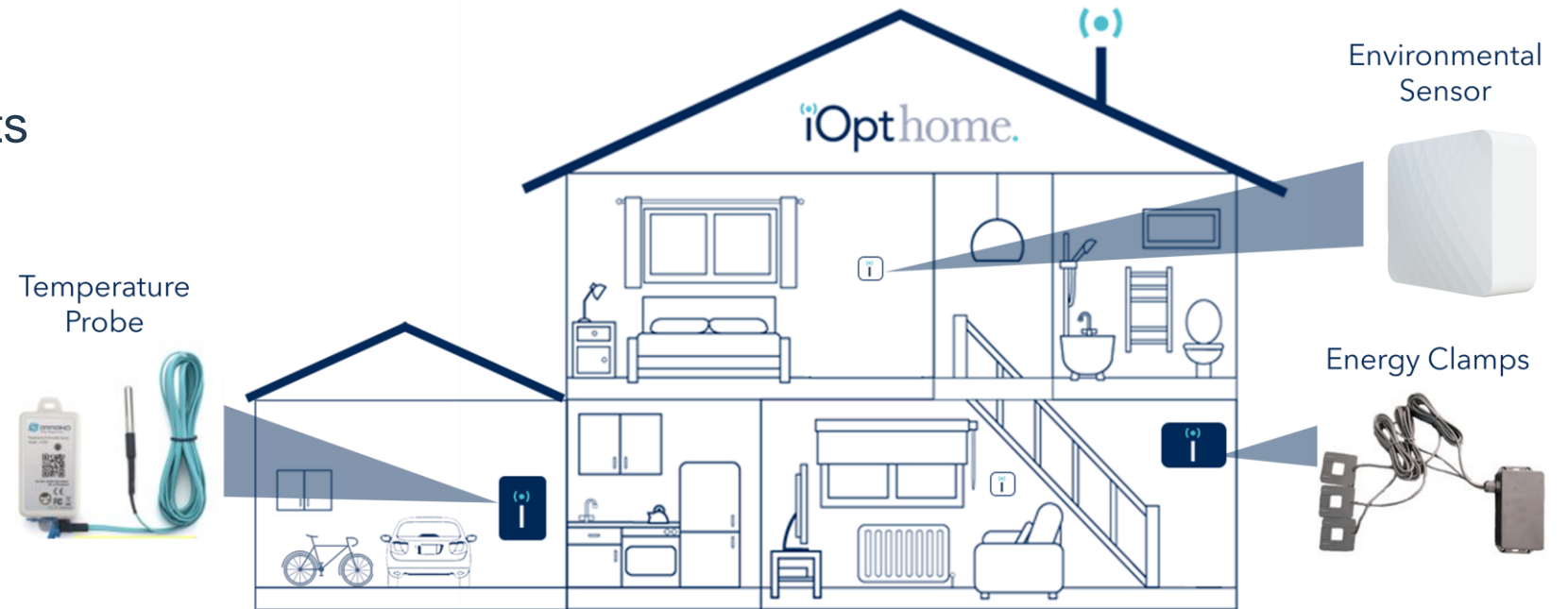
## Opportunity.

- (•) Pressure to decarbonise and reach Net Zero
- (•) Technology is available now
- (•) Data is the key to delivering results

“With the right data, landlords can target investment, avoid wasted spend, and accelerate progress towards Net Zero.”

# iOpt – Detect. Prevent. Protect.

- (●) Remote property monitoring
- (●) Sensors/third parties
- (●) Data insight specialists



iOpt.

Properties that are 'Damp' despite warmer weather.



1

Well Heated +  
Well Ventilated

Possible Fabric Issue



2

Well Ventilated

Possible Fabric Issue



5

Poorly Ventilated

Ventilation Advice  
Required

Poorest Performing Properties: Bottom Two

**6 iOpt Drive**  
Bedroom 1

	30 Days	90 Days
Temperature (°C)	18.5°C	16.4°C
Humidity (%)	70%	72%
CO <sub>2</sub> (ppm)	871ppm	1140ppm

Alert: Damp despite good heating and ventilation

Issue:

- Heating improved and CO<sub>2</sub> levels have dropped. Despite this, humidity remains above 70% red threshold.

**80 iOpt Park**  
Bedroom 2

	30 Days	90 Days
Temperature (°C)	16.9°C	16.5°C
Humidity (%)	70%	62%
CO <sub>2</sub> (ppm)	810ppm	770ppm

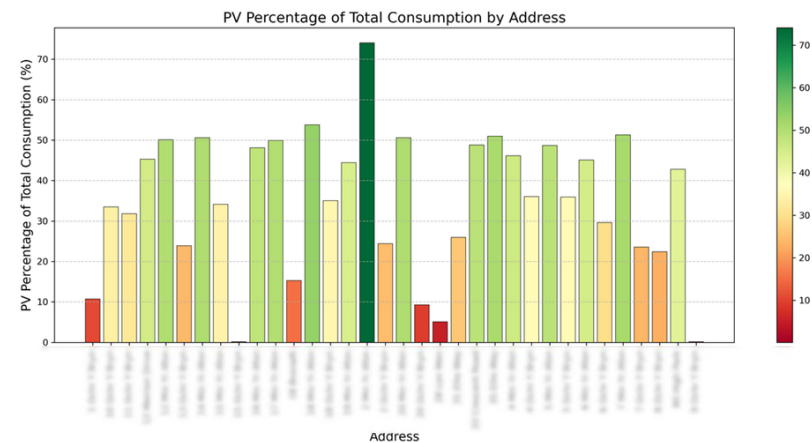
Alert: Damp despite good ventilation

Issue:

- Humidity has risen above red threshold. This is despite ventilation remaining low.



## PV Generation as a Percentage of Total Consumption



In June, many properties showing PV generation around 50% of total consumption. A few in red worth reviewing.

## iOpt – Detect. Prevent. Protect.

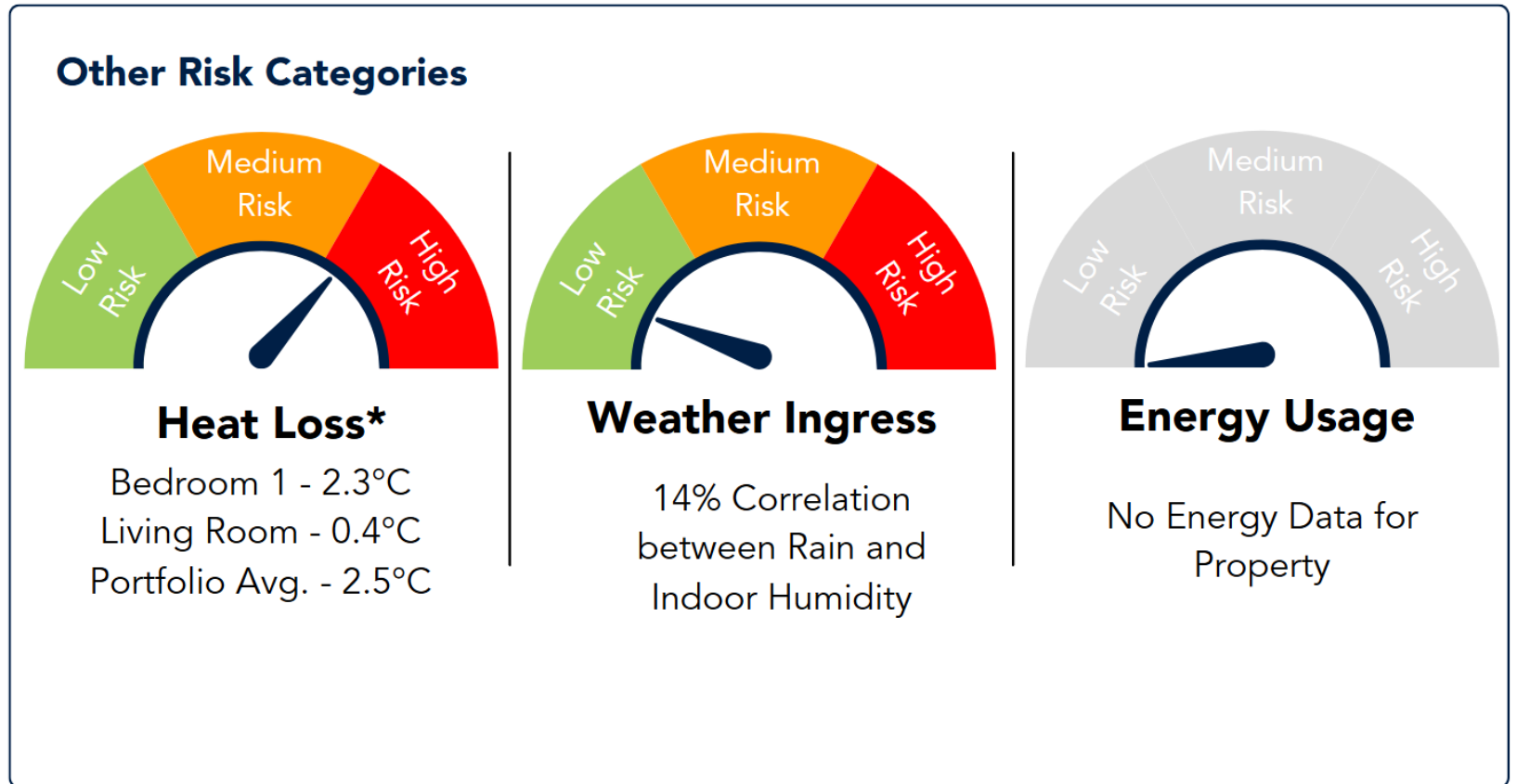
- (•) Remote property monitoring
- (•) Sensors/third parties
- (•) Data insight specialists
- (•) Aggregate, learn, share
- (•) Adoption
- (•) Barriers – fear/status quo/communication

“Another  
thing I have  
to do!”

iOpt.

# Beyond Basic Monitoring.

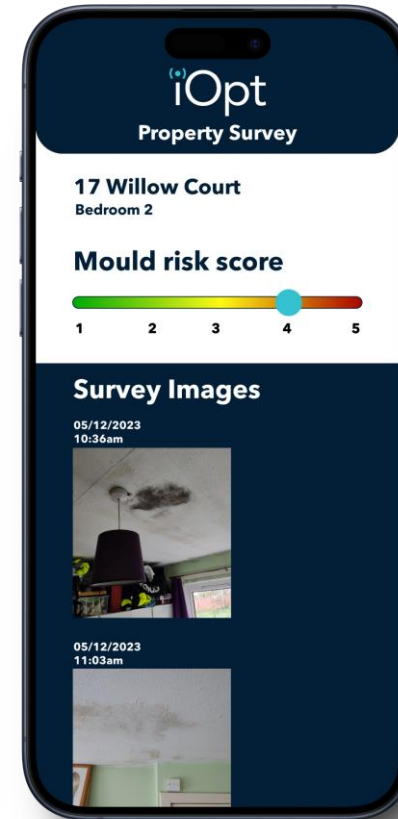
- (●) ASHP
- (●) Solar PV
- (●) MVHR
- (●) Battery Storage
- (●) Fabric Interventions



\*Avg. loss first hour after heating cycle

# AI and Property Management.

- (•) Predictive Analytics
- (•) Dynamic Threshold Setting
- (•) Anomaly Detection
- (•) Image Recognition and Analysis

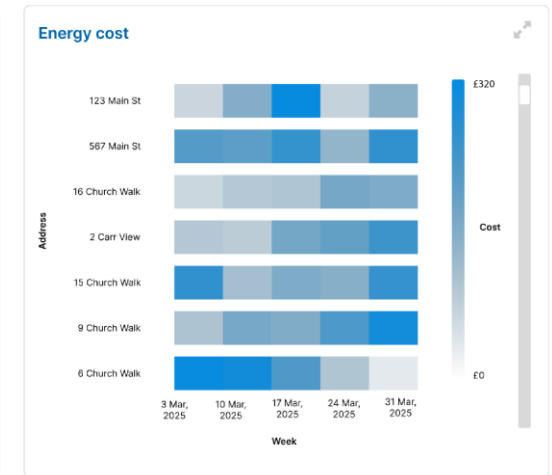
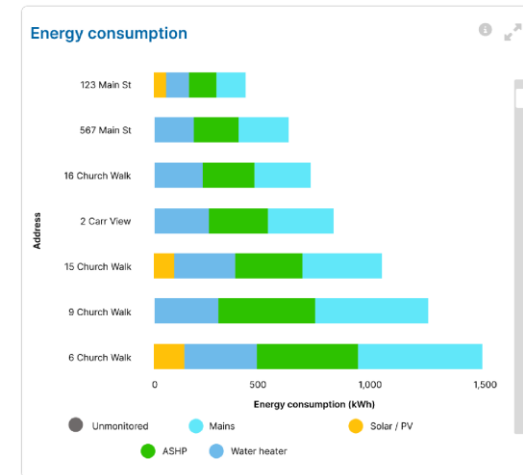




# Social Value.

- (•) Improve Health Outcomes
- (•) Avoid Disengagement and Frustration
- (•) Thermal Comfort Appraisals
- (•) Reduce Fuel Poverty and Overheating
- (•) Prove Energy Cost Reduction
- (•) Evidence Based Impact

## Energy



## Consumption Readings

**1 Day**

13 MAY

7.11 kWh

£1.92

**7 Days**

7 MAY - 13 MAY

56.69 kWh

£15.32

**30 Days**

14 APR - 13 MAY

255.83 kWh

£69.15

**90 Days**

13 FEB - 13 MAY

783.00 kWh

£200.61

iOpt.

# Delivering Retrofit Outcomes

- (•) Close the loop
- (•) Support your teams
- (•) Learn at scale
- (•) Drive social value





## Contact.

**Tom Davie**

Head of Customer Success + Insights

E: [tom.davie@ioptassets.com](mailto:tom.davie@ioptassets.com)

P: +44 (0) 751 639 6906



[www.ioptassets.com](http://www.ioptassets.com)